

FINKSBURG PLAZA



3000 Gamber Rd,
Finksburg, MD 21048



located on the corner of
Route 91 & 140

Market OVERVIEW

Finksburg Plaza is a one-stop convenience style shopping center in what's called "The Gateway of Carroll County". This makes it a destination for homeowners as far as a 20 minute drive away. The location was carefully selected to be in a location without any other major shopping centers in the area; but with plenty of homeowners who need one. This translates into large volumes of daily visitors during commuting hours, daytime hours, and weekend hours.

In addition to the perfect location, Finksburg Plaza also boasts:

- Newly constructed entrance
- National tenants
- Large, mixed-use retail environment
- Ample parking
- Substantial daily traffic

No matter your business, the Finksburg Plaza in Finksburg, MD is the perfect location for any business seeking space for lease in Finksburg, MD or surrounding areas.



TOMARCHIO ENT.

Demographic Insights

(within a 5-mile radius)

POPULATION
70K



According to Placer AI, foot traffic trends in the zip code 21048 place Finksburg Plaza at #1 most visited area.

TOMARCHIO ENT.

HOUSEHOLD INCOME

\$95.4k

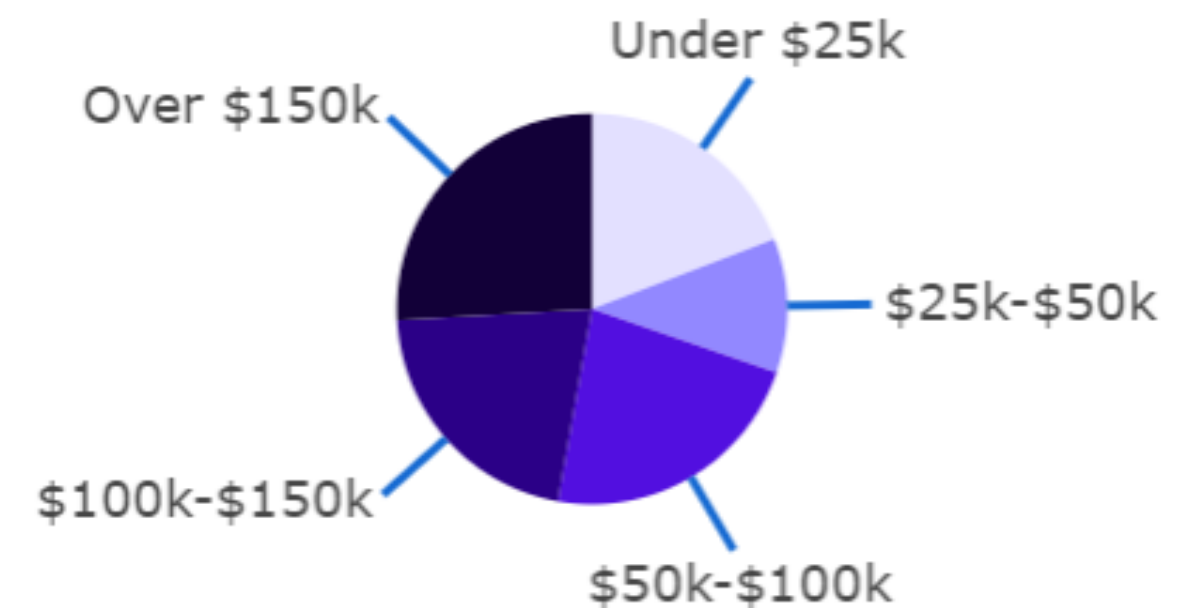
Median Income

\$124k

2028 Estimate

↑ **30%**

Growth Rate



data provided via Crexi

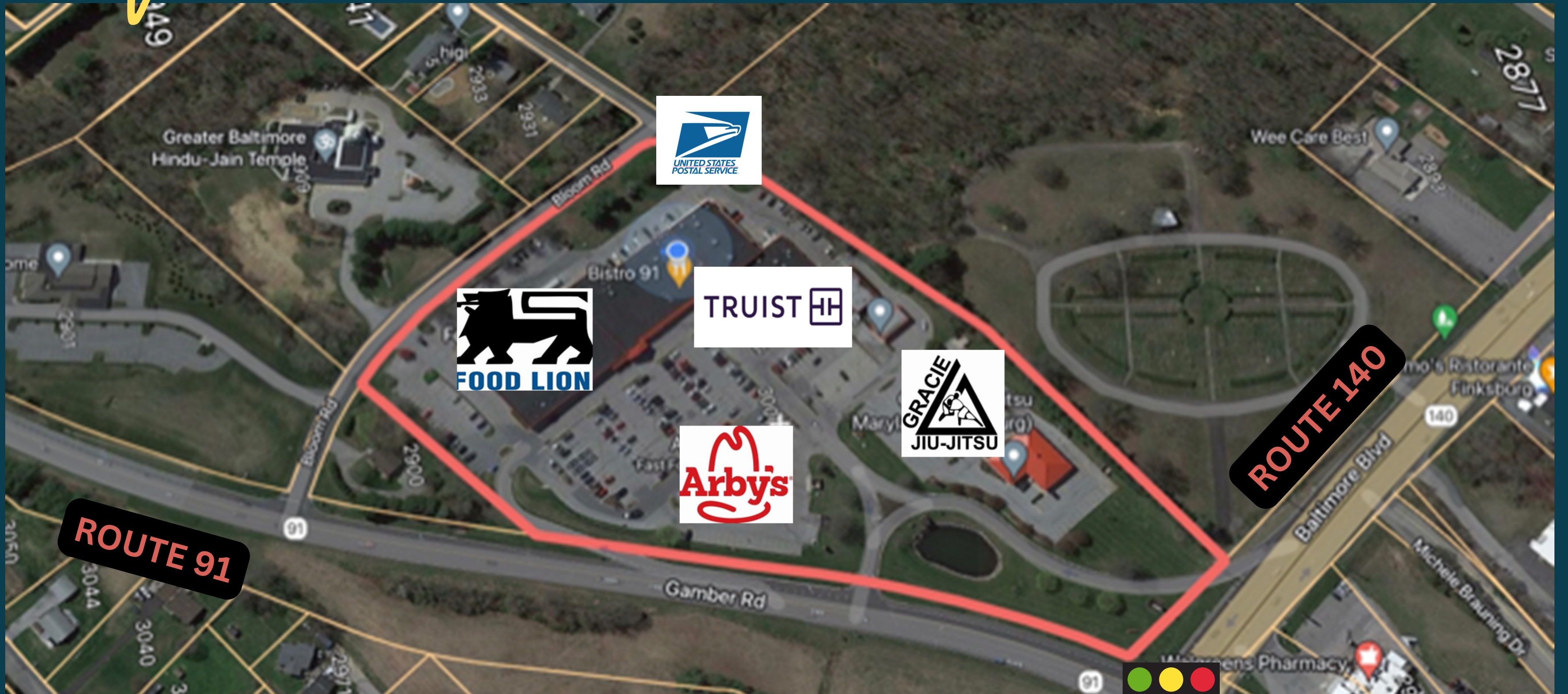
Tenant VARIETY



AND MANY MORE...

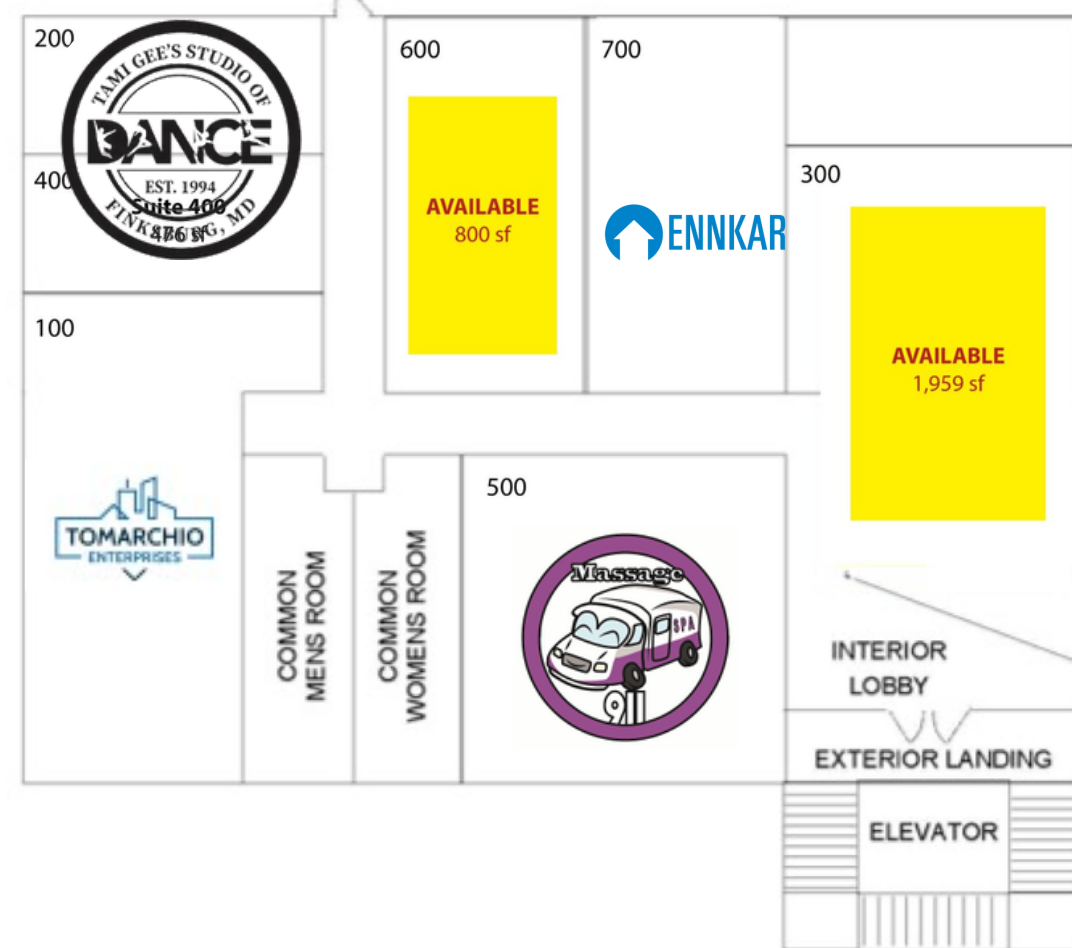
TOMARCHIO ENT.

Map VIEW

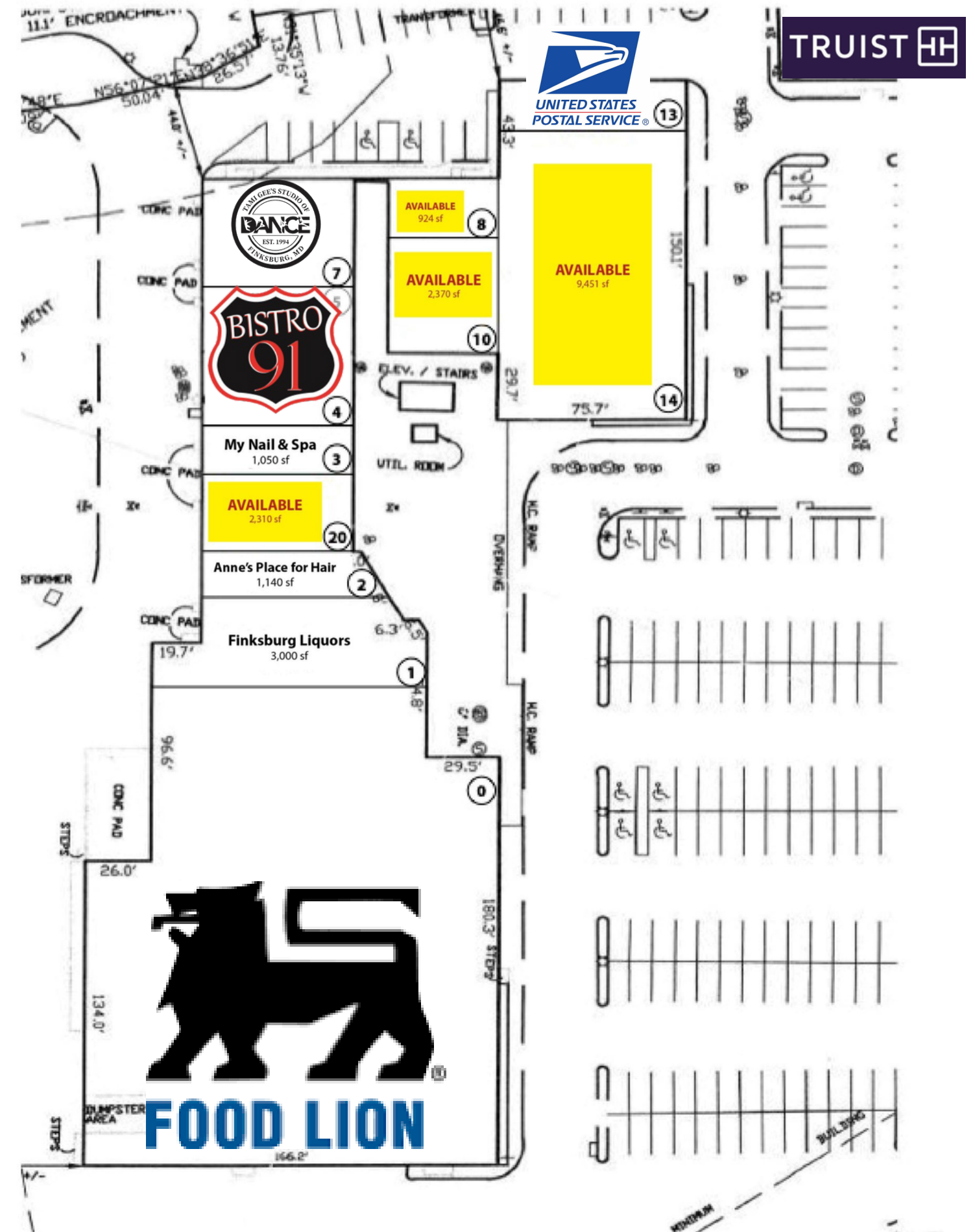


Existing Site PLAN

FINKSBURG PLAZA OFFICES - 2nd FLOOR AVAILABLE SPACE



This is our FIRST FLOOR RETAIL Available Space
We also have office space available on the second floor - See additional floor plans



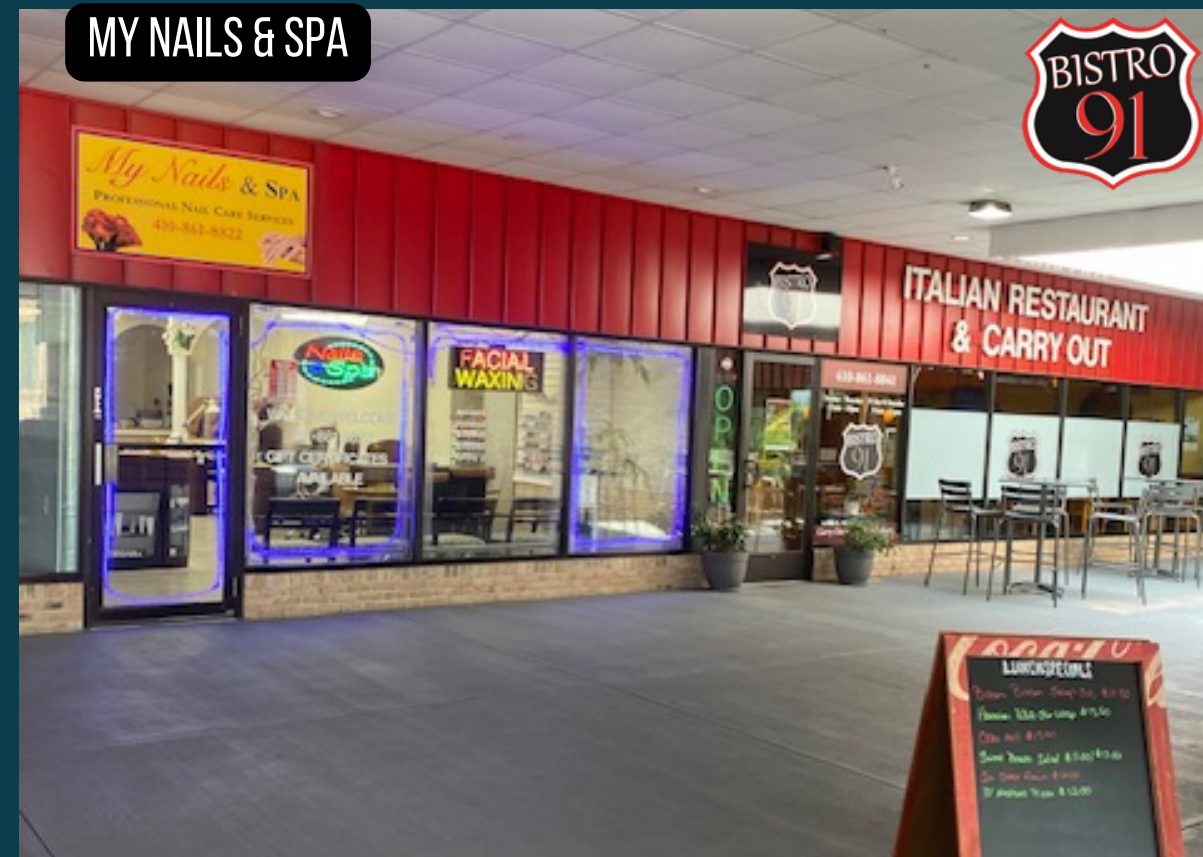
Shopping Center

EXTERIOR



TOMARCHIO ENT.

Shopping Center ALCOVE



TOMARCHIO ENT.

Shopping Center

OFFICE SUITES



TOMARCHIO ENT.

Shopping Center

AVAILABLE SPACES

First Floor:

- 924 sf
- 2,310 sf
- 2,370 sf
- 9,451 sf

Second Floor:

- 800 sf
- 1,959 sf

*Visit our listing
at the link below:*

